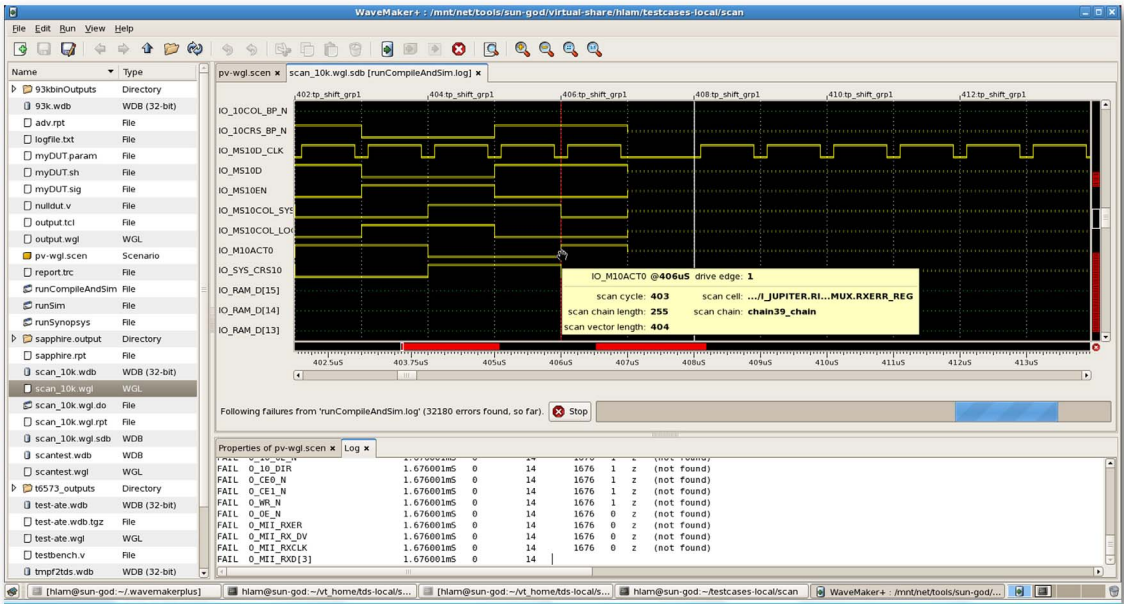


Startup Guide

Software waveform pattern editing for the M9195A/B PXI DSR module

Keysight M9192A DSR Pattern Editor and M9193A DSR Pattern Editor with Converters



Notices

© Keysight Technologies, Inc. 2016

No part of this manual may be reproduced in any form or by any means (including electronic storage and retrieval or translation into a foreign language) without prior agreement and written consent from Keysight Technologies, Inc. as governed by United States and international copyright laws.

Manual Part Number

M9192-90001

Edition

First Edition, May 2016

Printed in

Malaysia

Published by

Keysight Technologies, Inc.
900 S. Taft Ave.
Loveland, CO 80537 USA

Trademarks

Technology Licenses

The hardware and/or software described in this document are furnished under a license and may be used or copied only in accordance with the terms of such license.

Declaration of Conformity

Declarations of Conformity for this product and for other Keysight products may be downloaded from the Web. Go to <http://keysight.com/go/conformity>.

You can then search by product number to find the latest Declaration of Conformity.

U.S. Government Rights

The Software is “commercial computer software,” as defined by Federal Acquisition Regulation (“FAR”) 2.101. Pursuant to FAR 12.212 and 27.405-3 and Department of Defense FAR Supplement (“DFARS”) 227.7202, the U.S. government acquires commercial computer software under the same terms by which the software is customarily provided to the public. Accordingly, Keysight provides the Software to U.S. government customers under its standard commercial license, which is embodied in its End User License Agreement (EULA), a copy of which can be found at <http://www.keysight.com/find/sweula>. The license set forth in the EULA represents the exclusive authority by which the U.S. government may use, modify, distribute, or disclose the Software. The EULA and the license set forth therein, does not require or permit, among other things, that Keysight: (1) Furnish technical information related to commercial computer software or commercial computer software documentation that is not customarily provided to the public; or (2) Relinquish to, or otherwise provide, the government rights in excess of these rights customarily provided to the public to use, modify, reproduce, release, perform, display, or disclose commercial computer software or commercial computer software documentation. No additional government requirements beyond those set forth in the EULA shall apply, except to the extent that those terms, rights, or licenses are explicitly required from all providers of commercial computer software pursuant to the FAR and the DFARS and are set forth specifically in writing elsewhere in the EULA. Keysight shall be under no obligation to update, revise or otherwise modify the Software. With respect to any technical data as defined by FAR 2.101, pursuant to FAR 12.211 and 27.404.2 and DFARS 227.7102, the U.S. government acquires no greater than Limited Rights as defined in FAR 27.401 or DFAR 227.7103-5 (c), as applicable in any technical data.

Warranty

THE MATERIAL CONTAINED IN THIS DOCUMENT IS PROVIDED “AS IS,” AND IS SUBJECT TO BEING CHANGED, WITHOUT NOTICE, IN FUTURE EDITIONS. FURTHER, TO THE MAXIMUM EXTENT PERMITTED BY APPLICABLE LAW, KEYSIGHT DISCLAIMS ALL WARRANTIES, EITHER EXPRESS OR IMPLIED, WITH REGARD TO THIS MANUAL AND ANY INFORMATION CONTAINED HEREIN, INCLUDING BUT NOT LIMITED TO THE IMPLIED WARRANTIES OF MERCHANTABILITY AND FITNESS FOR A PARTICULAR PURPOSE. KEYSIGHT SHALL NOT BE LIABLE FOR ERRORS OR FOR INCIDENTAL OR CONSEQUENTIAL DAMAGES IN CONNECTION WITH THE FURNISHING, USE, OR PERFORMANCE OF THIS DOCUMENT OR OF ANY INFORMATION CONTAINED HEREIN. SHOULD KEYSIGHT AND THE USER HAVE A SEPARATE WRITTEN AGREEMENT WITH WARRANTY TERMS COVERING THE MATERIAL IN THIS DOCUMENT THAT CONFLICT WITH THESE TERMS, THE WARRANTY TERMS IN THE SEPARATE AGREEMENT SHALL CONTROL.

Keysight Technologies does not warrant third-party system-level (combination of chassis, controllers, modules, etc.) performance, safety, or regulatory compliance unless specifically stated.

Safety Information

CAUTION

A CAUTION denotes a hazard. It calls attention to an operating procedure or practice that, if not correctly performed or adhered to, could result in damage to the product or loss of important data. Do not proceed beyond a CAUTION notice until the indicated conditions are fully understood and met.

WARNING

A WARNING denotes a hazard. It calls attention to an operating procedure or practice, that, if not correctly performed or adhered to, could result in personal injury or death. Do not proceed beyond a WARNING notice until the indicated conditions are fully understood and met.

Contents

- System Requirements 8
- Software Installation 8
 - Running the Software 8
- Licensing the DSR Software 9
 - Transporting a license to another host PC 10
 - Your PC Host ID 10
 - Where can I find the Host ID? 10
- Using the M9192A DSR Software with the M9195A DSR 12
 - Starting the DSR Software 12
- Additional Information 13
 - DSR Software Documentation 13
 - M9195A documentation 13

Introduction

This manual covers installation, startup and basic use of the:

- M9192A Digital Stimulus/Response Pattern Editor software (Pattern Editor Software in this guide). The Pattern Editor Software is an integrated logic analyzer graphical editor for development and analysis of digital tests.
- M9193A DSR Pattern Editor with Data Converters software that provides conversion utilities for WGL, EVCD, and other waveform file formats. The M9192A Pattern Editor Software is required to use the M9193A DSR Pattern Editor with Data Converters software.

This Startup Guide does not provide a detailed description for using the software nor describes all of its features; for detailed user information, refer to the software help file (start the software, then click **Help > Manual**).

The software, sourced from TSSI Solstice™, provides software waveform pattern editing for the Keysight M9195A/B PXIe Digital Stimulus/Response (DSR) module.

Key features of the software include:

- Edit test patterns in a self-documented, executable flow-diagram
- Debug failing patterns by identifying precise failure location and details
- Reproduce problems in the same simulation environment
- Correlate patterns across various formats and platforms
- Integration with leading logic simulators enables a prompt view of differences between expected ATE pattern states and that of the DUT.
- The graphical user interface (GUI) shows strobe placement, the nature of failure, and the correlation of the design timestamps vs. tester cycle.
- Failure information is available in text logs for post-processing use in any of the custom simulation environments. View failures by dragging and dropping the error log file into the software's waveform editor. Both EDA's error format (from simulators or ATPG tools) and STDF (ATE standard data failure format) are supported.

NOTE

The M9192A software editor requires additional licensing. See [“Licensing the DSR Pattern Editor Software”](#) on page 9.

System Requirements

Windows Requirements	
Operating System	Windows 7 SP1 32-bit and 64-bit Windows 8 and 8.1 (32-bit and 64-bit)
Processor Speed	2 GHz 64-bit (x64)
Available Memory	4 GB minimum (8 GB recommended for 64-bit OS)
Available Disk Space necessary for installation	300 Mb

Software Installation

NOTE

A free trial version of the software is available. This trial version may be used for 30 days with no obligation. After 30 days, you must purchase a software license to continue using the software. Each PC requires a separate license. For purchasing information, go to:
www.keysight.com/find/M9192A

The software can be downloaded at: www.keysight.com/find/M9192A

- 1 Select the **Trials & Licenses** tab.
- 2 Click the **Details & Download** button.
- 3 Read the instructions and click the red **Download** button. Follow all on-screen instructions.

Running the Software

- 1 From the Windows **Start** button, select **All Programs**.
- 2 Scroll down to **Keysight** then select **DSR Pattern Editor**.

Licensing the DSR Pattern Editor Software

The DSR Pattern Editor Software can be installed and used for 30 days with a temporary license. After 30 days a permanent software license is required to continue to use the software. Each PC requires a separate software license. For software and licensing information, go to: www.keysight.com/find/M9192A

NOTE

For the 30 day temporary license, you will receive installation instructions and a license valid for 30 days.

NOTE

Installing the DSR Pattern Editor software installs the Keysight License Manager software on your PC (if it was not previously installed by other Keysight software).

- 1 Once you purchase the Pattern Editor Software, you will receive an Entitlement Certificate email describing how to redeem your license. Note that when purchasing the software, you will be given the choice to receive a printed copy of the Entitlement Certificate, an email with the certificate, or both.
- 2 On the PC where you have installed and plan to run the Pattern Editor Software (you must be logged on with Administrator privileges), log onto Keysight's Licensing website at: www.keysight.com/find/softwaremanager. Note, you will need to register if you don't have an account.
- 3 Follow the instructions in the Entitlement Certificate to redeem the license. You will need to enter the Entitlement Certificate number and the host ID of the PC (see [page 10](#) of this guide for host ID information).
- 4 Once you have entered the information, a license file is emailed (as an attachment) to the PC. The license file has a .lic file extension; for example: 10000996212_829728.lic.
- 5 In this email, save the attached license file to a temporary location on the C: drive of the computer where you have installed the Pattern Editor Software.
- 6 Start the Keysight License Manager on your computer. Click Windows **Start > All Programs > Keysight License Manager > Keysight License Manager**.
- 7 Use **File > Install** to browse and open the license file that was attached to this message and then minimize Keysight License Manager.
- 8 An **Install License File(s)** window appears. In this window, browse to the location where you saved the license file. Select the license file, and then click the **Open** button.

The license is automatically installed and now appears in the Tree View of the Keysight License Manager as an installed license under the host system. The Pattern Editor Software is now licensed and ready for use.

Transporting a license to another host PC

To easily transport a license, Keysight recommends that you configure your system so that the host system running Keysight License Manager (KLM) connects both to the Internet and to the LAN connecting the source and target systems.


- The system running KLM can be the source system, the target system, or a separate Windows-based computer.
- When the source system and the target system both have LAN connectivity, you can use a simple drag-and-drop action to transport a license using KLM.

NOTE

To transport a license, KLM must connect to the services available on the Keysight Software Manager Transport License Web site. This connection takes up to 90 seconds to complete a license transport operation.

KLM automatically removes a transported license from the source system. The license is then re-issued by the Keysight Software Manager Transport License Web Service, and then installed onto a target system

For additional information and procedures to transport a license, refer to the Keysight License Manager Help:

- 1 Open the About Keysight License Service dialog box:
 - a Double-click the Keysight License Manager icon  in the Windows toolbar. (If the icon is hidden, click the “Show hidden icons” button on the right side of the toolbar.
 - b Click **Help > Keysight License Manager Help**.

Your PC Host ID

A Host ID is a permanent, unique identifier to a computer or a Keysight instrument or application that locks licenses to that particular computer, instrument or application. If the host information provided at the time the license is generated is wrong, then the license will not enable the features purchased.


NOTE

It is important that you enter the correct host ID information. Your license will not enable the software if the host information does not exactly match your instrument or application.

Where can I find the Host ID?

The Keysight License Manager Application is included with your Keysight software product. It is installed on your computer when you install your Keysight software product.

To obtain a Host ID from the Keysight License Manager (KLM) application, follow these steps:

- 1** Open the **About Keysight License Service** dialog box:
 - a** Right-click the Keysight License Manager icon  in the Windows toolbar. (If the icon is hidden, click the “Show hidden icons” button on the right side of the toolbar.)
 - b** Select the About Keysight License Service.
- 2** Click the Copy Host ID link to copy the host ID to the Windows clipboard.

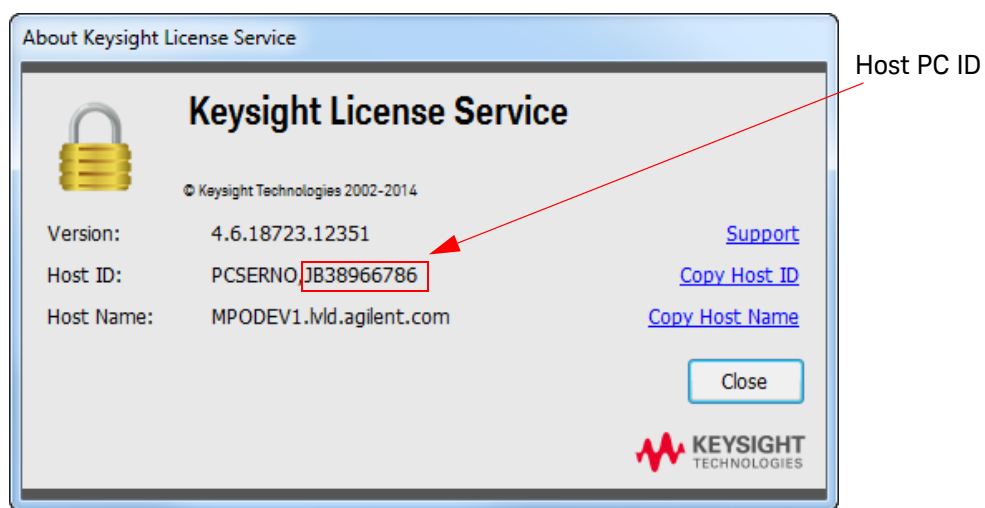


Figure 1 Keysight License Service Dialog Box

- 3** You can request a license file from: www.keysight.com/find/softwaremanager. A Keysight order number, Entitlement Certificate numbers and Host ID, from Step 2 above, are required.

Using the M9192A Pattern Editor Software with the M9195A/B DSR

Because the M9192A Pattern Editor Software is an editing tool (not a tool for creating waveform patterns and vectors), you must first create an initial pattern file to import into the Pattern Editor Software. This initial file is most commonly a STIL file. Other file formats supported include an ASCII file or WGL file.

NOTE

Example Programs. The Pattern Editor Software help file provides complete scenarios (an initial standard STIL file, a STIL file that was exported from the M9195A/B Soft Front Panel, and ASCII Signal and Pattern files) to help you understand how to use the software. The help file also includes a detailed example of importing a file into the M9195A/B Soft Front Panel. Refer to the Pattern Editor Software help file for detailed information demonstrating how to use the software (start the Pattern Editor Software, then click **Help > Manual**).

Starting the Pattern Editor Software

To start the software:

- On Windows 7:
 - Select **Start > All Programs > Keysight > MDsr > M9192A Pattern Editor**.
- On Windows 10:
 - Select **Start > All Apps > Keysight > M9192A Pattern Editor**

Figure 2 shows the basic layout of the M9192A software screen.

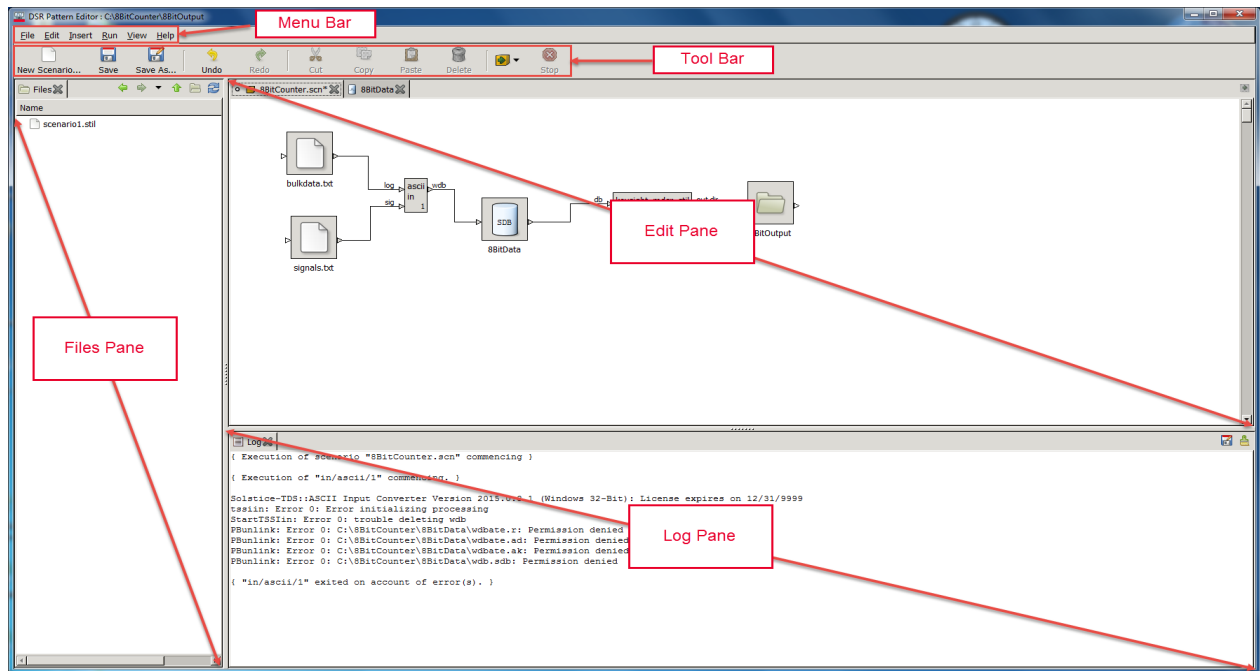


Figure 2 Basic Layout of the M9192A Display

Additional Information

Pattern Editor Software Documentation

The Pattern Editor Software help file is installed when you install the software and is available by clicking:

Start > All Programs > Keysight > DSR Pattern Editor Help

Complete Pattern Editor Software and documentation is available at:

www.keysight.com/find/M9192A

As long as you subscribe to the M9192A Support, you will be notified by email when software updates are available and how to obtain them.

M9195A/B documentation

Documentation for the M9195A/B PXIe Digital Stimulus/Response module is available by clicking:

Start > All Programs > Keysight > MDsr

The latest documentation and any firmware upgrades are available at:

www.keysight.com/find/M9195B



This information is subject to change without notice.

© Keysight Technologies, 2016

Edition 1 May 2016

Printed in Malaysia



M9192-90001

www.keysight.com